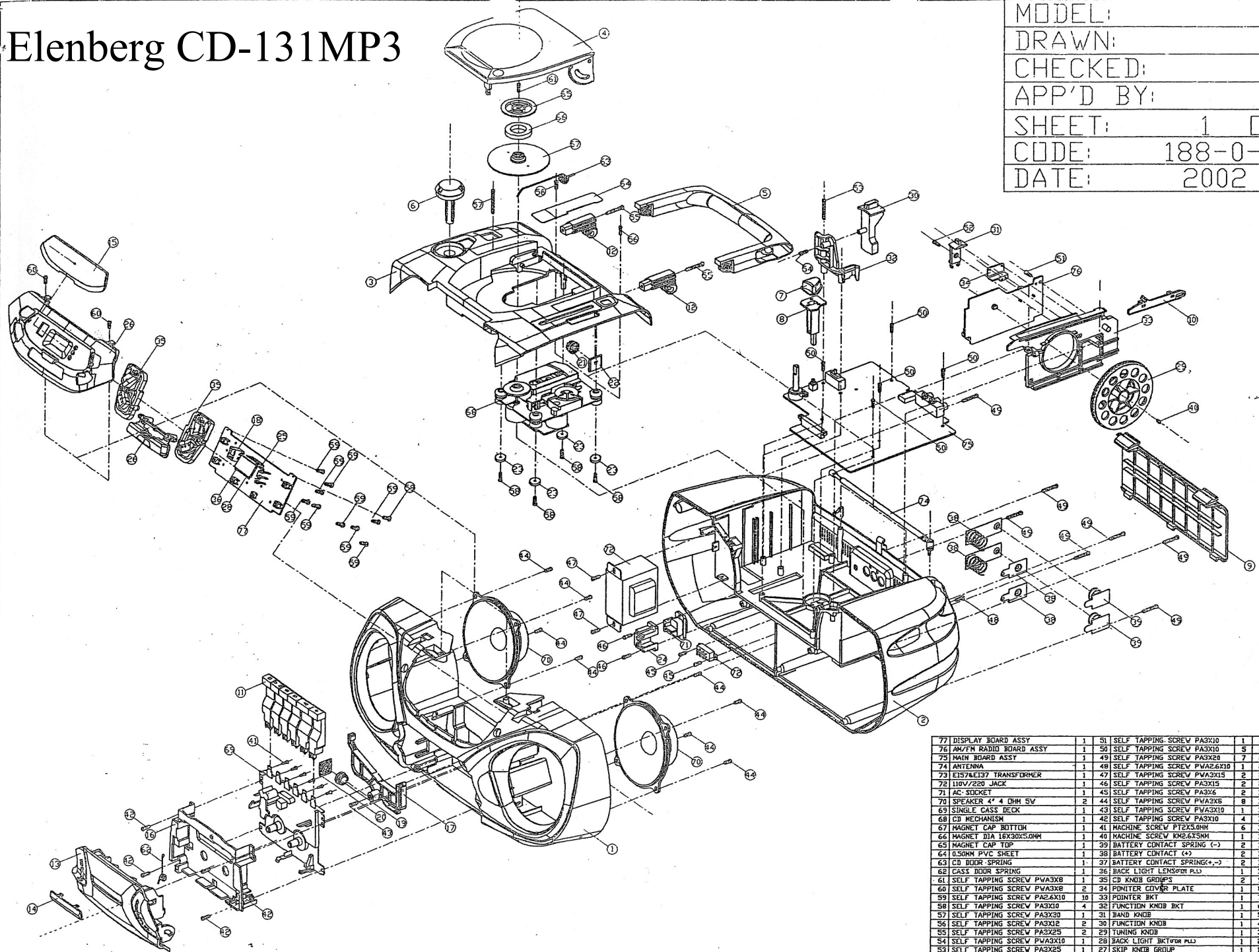


Elenberg CD-131MP3



MODEL:	
DRAWN:	
CHECKED:	
APP'D BY:	
SHEET:	1 OF 1
CODE:	188-0-0VCDS1
DATE:	2002 12 16

77	DISPLAY BOARD ASSY	1	51	SELF TAPPING SCREW PA3X10	1	25	LCD BKT	1
76	AM/FM RADIO BOARD ASSY	1	50	SELF TAPPING SCREW PA3X10	5	24	AC SOCKET COVER	1
75	MAIN BOARD ASSY	1	49	SELF TAPPING SCREW PA3X20	7	23	CD DECK WASHER	4
74	ANTENNA	1	48	SELF TAPPING SCREW PWA2.6X10	1	22	CD DOOR GEAR HOLDER	1
73	E157AE137 TRANSFORMER	1	47	SELF TAPPING SCREW PWA2X15	2	21	CD DOOR GEAR	1
72	110V/220 JACK	1	46	SELF TAPPING SCREW PA3X15	2	20	CASS DOOR GEAR HOLDER	1
71	AC SOCKET	1	45	SELF TAPPING SCREW PA3X6	2	19	CASS DOOR GEAR	1
70	SPEAKER 4" 4 OHM 5W	2	44	SELF TAPPING SCREW PWA3X8	6	18	REMOTE SENSOR BKT	1
69	SINGLE CASS DECK	1	43	SELF TAPPING SCREW PWA3X10	1	17	RECORDING BKT	1
68	CD MECHANISM	1	42	SELF TAPPING SCREW PA3X10	4	16	CASS BOX	1
67	MAGNET CAP BOTTOM	1	41	MACHINE SCREW PT2X3.0MM	6	15	DISPLAY LENS	1
66	MAGNET DIA 18X30X5.0MM	1	40	MACHINE SCREW KM2.6X5MM	1	14	CASS DOOR LENS	1
65	MAGNET CAP TOP	1	39	BATTERY CONTACT SPRING (-)	2	13	CASS DOOR	1
64	0.50MM PVC SHEET	1	38	BATTERY CONTACT (+)	2	12	HANDLE ROTATE AXIS	2
63	CD DOOR SPRING	1	37	BATTERY CONTACT SPRING(+,-)	2	11	CASS KNOB	6
62	CASS DOOR SPRING	1	36	BACK LIGHT LENS(RED PL)	1	10	POINTER	1
61	SELF TAPPING SCREW PWA3X8	1	35	CD KNOB GROUPS	2	9	BATTERY DOOR	1
60	SELF TAPPING SCREW PWA3X8	2	34	POINTER COVER PLATE	1	8	BASS-KNOB-BKT	1
59	SELF TAPPING SCREW PA2.6X10	10	33	POINTER BKT	1	7	BASS-KNOB	1
58	SELF TAPPING SCREW PA3X10	4	32	FUNCTION KNOB BKT	1	6	VOLUME-KNOB	1
57	SELF TAPPING SCREW PA3X30	1	31	BAND KNOB	1	5	HANDLE	1
56	SELF TAPPING SCREW PA3X12	2	30	FUNCTION KNOB	1	4	CD DOOR	1
55	SELF TAPPING SCREW PA3X25	2	29	TUNING KNOB	1	3	TOP-CABINET	1
54	SELF TAPPING SCREW PWA3X10	1	28	BACK LIGHT BKT(RED PL)	1	2	REAR CABINET	1
53	SELF TAPPING SCREW PA3X25	1	27	SKIP KNOB GROUP	1	1	FRONT-CABINET	1
52	SELF TAPPING SCREW PWA3X10	1	26	FRONT COVER	1	NO	PARTS NAME	0'ty



VCD-88型BOM架构图

成品编号：

波段：FM/AM

FM88-108

版本：A001

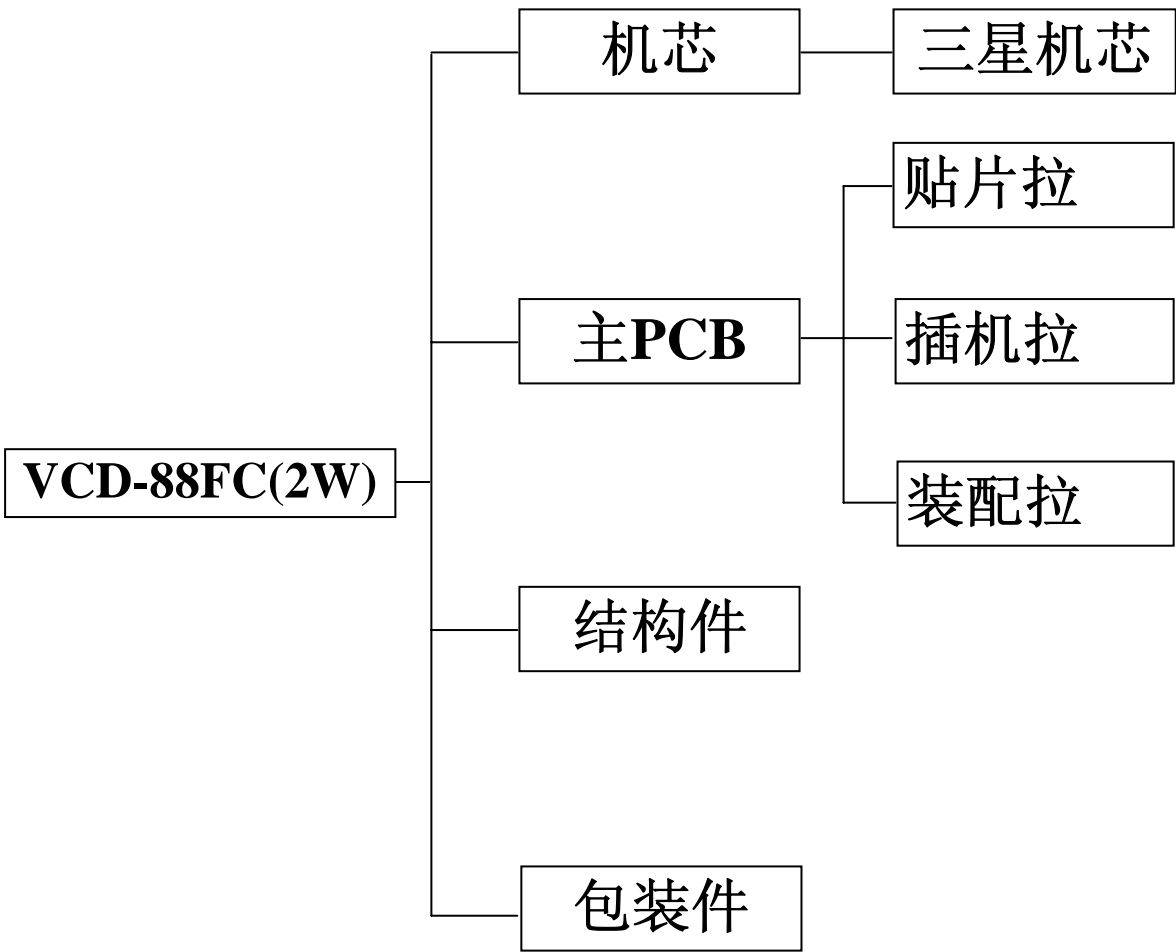
BOM发行阶段：

☐ 量产

☒ 生产试产

☐ 工程试产

☐ 估价



部门	经理室	采购部	生产部	货仓部	插机拉	财务部
签收						

制表：		确认：		批准：	
-----	--	-----	--	-----	--

乔新有限公司

[illegible]

乔新有限公司

用WG-RP录放板物料明细表

机型	VCD-88FC (2W)		BOM层		线材五金	
项次	物料名称	物料规格	用量	单位	位号	备注
1	解码板 MPEGS ASY DECORDER	8100	1	PCS		新美格
2	VCD输出插座 VCD OUT RCA SOCKET	TCA-310 3位	1	PCS		R红 L白 V黄
3	VCD叶片开关 SWITCH PLATE		1	PCS		
4	VCD盖锁 VCD COVER LOCK		1	PCS		
5	散热片 HEATSINK	TA8227GP	1	PCS		590共用
5--1	散热片 HEATSINK	34063A	1	PCS		U形VCD共用
5--2	散热片 HEATSINK	D882E	1	PCS		小U形带Φ3MM丝牙孔
6	FM天线 FM WIRE ANTENNA	6158 4节	1	PCS		
7	火牛 POWER TRANSFORMER	WG4830 13V	1	PCS	初级引线160MM次级引线330MM	次级带2P/2.5插头
8	喇叭 SPEAKER UNIT	8欧3W	2	PCS		带螺丝孔
9	卡门弹簧 CASSETTE K00R SPRING		1	PCS		专用周VCD-23机
10	VCD盖弹簧 VCD COVER SPRING		1	PCS		
11	喇叭网 SPEAKER GRILL	左	1	PCS		
11--1	喇叭网 SPEAKER GRILL	右	1	PCS		
12	电池正片 BATTERY CONTACT PLATE PLUS	50机	1	PCS		两种底壳其中一种少用1片
12--1	电池负片 BATTERY CONTACT PLATE MINUS	590机	1	PCS		两种底壳其中一种少用1片
12--2	正负连片 CONTACT PLATE PLUSIMINUS		2	PCS		
13	录音压片 RECORDING BRACK	14*26*0.4MM	1	PCS		
14	天线焊片 ANT. SOLDER PLATE		1	PCS		
15	WG-120铁支架 STEEL BASE		1	PCS		前置板
16	AC插座 AC POWER SOCKET		1	PCS		
17	磁铁 MAGNET	Φ30*Φ16*5	1	PCS		大磁力
	螺丝 SCREW	PWMTT2*5三角钉	6	PCS	机芯按钮硬自攻6	
18	螺丝 SCREW	PMTT2*5三角钉	2	PCS	前置板1.录音片1	
18--2	螺丝 SCREW	PMTT2*3三角钉	2	PCS	录音板支架2	
18--3	螺丝 SCREW	PA2.6*8	1	PCS	接收架	
18--4	螺丝 SCREW	PWA2*12	1	PCS	VCD开关	
18--5	螺丝 SCREW	KM2.6*5	2	PCS	PVC	
18--6	螺丝 SCREW	PT3*4	1	PCS	磁吸盖	
18--7	螺丝 SCREW	PM2.6*5	1	PCS	VC轮	
18--8	螺丝 SCREW	PWA2.6*12	4	PCS	VCD机芯	
	螺丝 SCREW	BA3*10	2	PCS	收音板支架2	
18--9	螺丝 SCREW	PWM3*8	1	PCS	小U型散热器	
18--10	螺丝 SCREW	PA3*10	7	PCS	主板5.收音板2.	
18--11	螺丝 SCREW	PA3*10	2	PCS	VCD插座	黑
18--12	螺丝 SCREW	PA3*12	2	PCS	顶底壳中后	
18--13	螺丝 SCREW	PA3*12	6	PCS	卡式机芯4.AC插2	黑
18--14	螺丝 SCREW	PA3*8	9	PCS	解码板1.按键板8	
18--15	螺丝 SCREW	PA3*15	2	PCS	底面壳中间	
18--16	螺丝 SCREW	PA3*20	7	PCS	底面壳	
18--17	螺丝 SCREW	PA3*25	3	PCS	手挽2.功能支架1	

用 WG-RP 录放板物料明细表

用新线材图说明

用新线材图说明

乔新有限公司

物料明细表

机型	VCD-88FC (2W)		BOM层			结构件
项次	物料名称	物料规格	用量	单位	重量 (g)	备注
1	磁棒支架 BAR HOLDER	大方形	1	PCS	0.12	
2	面壳 FRONT CABINET		1	PCS	482	
3	底壳 BACK CABINET		1	PCS	829	
4	顶壳 TOP CABINET		1	PCS	163	
5	VCD门 VCD DOOR		1	PCS	163	
6	手挽 HANDLE		1	PCS	49.5	
7	电池门 BATTERY DOOR		1	PCS	52.5	
8	音量钮 VOLUME SWITCH		1	PCS	5	
9	低音钮 DBB BRITTON		1	PCS	2	
10	低音钮驳脚 DBB BRITTON BRACK		1	PCS	2.5	
11	指针 DIAL POINTER		1	PCS	1	
12	暂停钮 PAUSE KNOB		1	PCS	4	
12--1	停止钮 STOP KNOB		1	PCS	4	
12--2	快进钮 F.FWD KNOB		1	PCS	4	
12--3	快倒钮 REWIND KNOB		1	PCS	4	
12--4	放音钮 PLAY KNOB		1	PCS	4	
12--5	录音钮 RECORDING KNOB		1	PCS	4	
13	选台钮 TUNING KNOB		1	PCS	21	
14	收音板支架 RADIO PCB BRACK		1	PCS	21	
15	功能面镜 CONTROL PANEL	圆形	1	PCS	7	
16	手挽转轴*2 HANDEL ADAPTOR		2	PCS	4*2	
17	卡门镜 CASSETTE DOOR LENS		1	PCS	18	
18	卡门兜 CASSETTE DOOR TRAY		1	PCS	21.5	同VCD-23
19	卡门 CASSETTE DOOR		1	PCS	61	
20	油轮*2 DAMPLING GEAR		2	PCS	0.5*2	
21	VCD油轮座 VCD DAMPLING GEAR		1	PCS	1	
22	卡门油轮座 CASSETTE DOOR DAMPLING GEAR		1	PCS	1	
23	遥控接收架 REMOTE RECEIVER HOLDER		1	PCS	0.5	
24	显示架 DISPLAY BRACK		1	PCS	2	
25	AC插套 ACSOCKET COVER		1	PCS	3.5	
26	介子*4 FIBRE RING		4	PCS	0.12*4	
27	功能钮 FUNCTION SWITCH		1	PCS	5.5	
28	功能钮支架 FUCNTION SWITCH BRACK		1	PCS	6.5	
29	波段钮 BAND SWITCH		1	PCS	1.5	
30	指针盖片 DIAL POINTER COVER		1	PCS	0.5	
31	VCD机芯防尘盖 VCD MECHANISM COVER		1	PCS	5	
32	磁吸上盖 DISC COVER TOP CABINET		1	PCS		五金料或塑胶料
33	磁吸下盖 DISC COVER BOTTOM CABINET		1	PCS	6	
34	按键钮 FRONT PANEL	左	1	PCS	6	电镀.显示板用
35	按键钮 FRONT PANEL	右	1	PCS	6	电镀.显示板用
36	面壳机芯位盲片	左	1	PCS	2	同VCD-23
37	面壳机芯位盲片	右	1	PCS	2	同VCD-23
38	背光镜 BACKLIGHT LENS		1	PCS		

乔新有限公司

[illegible]

乔新有限公司

物料明细表

机型	VCD-88FC (2W)		BOM层		显示板	
项次	物料名称	物料规格	用量	单位	位号	备注
1	显示板PCB DISPLAY BOARD	88FC-C-02	1	PCS		158*55*1.6MM
2	贴片电阻1206 RESISTOR CHIP	0R	3	PCS	R710.712.714.	
2--1	贴片电阻1206 RESISTOR CHIP	150R	2	PCS	R711.713	
2--2	贴片电阻0805 RESISTOR CHIP	0R	1	PCS	R704	
2--3	贴片电阻0805 RESISTOR CHIP	2.2M	1	PCS	并在C708上	附加
2--4	贴片电阻0805 RESISTOR CHIP	220R	1	PCS	R715	
2--5	贴片电阻0805 RESISTOR CHIP	1K	1	PCS	R709	
2--6	贴片电阻0805 RESISTOR CHIP	1.5K	1	PCS	R703	
2--7	贴片电阻0805 RESISTOR CHIP	10K	3	PCS	R705.706.708	
3	贴片电容0805 CAPACITOR CHIP	15P	2	PCS	C705.706	
3--1	贴片电容0805 CAPACITOR CHIP	150P	2	PCS	C703.704	
3--2	贴片电容0805 CAPACITOR CHIP	104P	2	PCS	C707.708	
3--3	贴片电容0805 CAPACITOR CHIP	1UF	1	PCS	C709	
4	贴片三极管 TRANSISTOR CHIP	9014	4	PCS	Q6.702.703.704	
5	电阻1/8W RESISTOR	100R	1	PCS	R702	
5--1	电阻1/8W RESISTOR	1K	1	PCS	R701	
6	电解 ELECT CAPACITOR	47UF/10V(4×7MM)	2	PCS	C701.702	小体积
7	二极管 DIODE	4148	2	PCS	D706.707	
7--1	稳压二极管 ZENER DIODE	2.7V	1	PCS	D708	
8	晶振 CRYSTAL	455E	1	PCS	CF1	
8--1	晶振 CRYSTAL	32.768KHz	1	PCS	CF702	
9	发射管 TRANSMITTER	BIR-M13E4G-2	1	PCS		
10	接收管 RECEIVER	C040523QXY	1	PCS		
11	灯仔 LED	Φ 3MM红高亮	1	PCS	电源灯	
11--1	灯仔 LED	Φ 3MM绿高亮	1	PCS	立体灯	
11--2	灯仔 LED	Φ 3MM蓝超亮	2	PCS	LCD	
12	显示器 LCDMODULE	双排脚80050	1	PCS		
13	轻解开关 TORCH SWITCH	6*6*4.3H	8	PCS	SW701.702.703.704.705.706.707.708	
14	邦定板 BONDING BOARD	42*31*1MM	1	PCS		
15	贴片电阻1206 RESISTOR CHIP	0R	1	PCS	R901	辅助焊接
15--1	贴片电阻0805 RESISTOR CHIP	100K	1	PCS	R902	辅助焊接
16	IC INTERGRATED CIRCUIT	NK1621	1	PCS		
16--1	IC INTERGRATED CIRCUIT	SM6221	1	PCS		
16--2	IC INTERGRATED CIRCUIT	CD3610	1	PCS		邦定板(双面)
17	跳线 JUMPER CABLE	0.4*46MM	1	PCS		
18	套管 WIRE TUBE	2.5*4MM	1	PCS	发射管	

用WG-RP录放板物料明细表

机型	VCD-88FC (2W)		BOM层		功放板	
项次	物料名称	物料规格	用量	单位	位号	备注
1	功放板 TAPE BOARD	128*98.5*1.6MM	1	PCS		VCD88M-M-0
2	贴片电阻0805 RESISTOR CHIP	100R	3	PCS	R409.410.419	
2--0	贴片电阻0805 RESISTOR CHIP	150R	2	PCS	R201.202.	
2--1	贴片电阻0805 RESISTOR CHIP	220R	1	PCS	R503.	
2--2	贴片电阻0805 RESISTOR CHIP	270R	2	PCS	R205.206	
2--3	贴片电阻0805 RESISTOR CHIP	470R	1	PCS	R502	
2--4	贴片电阻206 RESISTOR CHIP	0R	3	PCS	R0.J28.J11	
2--5	贴片电阻0805 RESISTOR CHIP	1K	7	PCS	R209.210.211.212.405.406.517	
2--6	贴片电阻0805 RESISTOR CHIP	1.5K	2	PCS	R426.427	
2--7	贴片电阻0805 RESISTOR CHIP	2.2K	1	PCS	R516	
2--8	贴片电阻0805 RESISTOR CHIP	5.6K	2	PCS	R703.704	
2--9	贴片电阻0805 RESISTOR CHIP	4.7K	2	PCS	R413.414	
2--10	贴片电阻0805 RESISTOR CHIP	10K	9	PCS	R207.208.415.416.417.418.420.421.422	
2--11	贴片电阻0805 RESISTOR CHIP	12K	1	PCS	R515	
2--12	贴片电阻0805 RESISTOR CHIP	22K	2	PCS	R407.408	
2--13	贴片电阻0805 RESISTOR CHIP	27K	2	PCS	R403.404	
2--14	贴片电阻0805 RESISTOR CHIP	33K	2	PCS	R423.424	
2--15	贴片电阻0805 RESISTOR CHIP	39K	4	PCS	R401.402.701.702	
2--16	贴片电阻0805 RESISTOR CHIP	100K	1	PCS	R213	
2--17	贴片电阻0805 RESISTOR CHIP	330K	2	PCS	R411.412	
3	贴片电容0805 CAPACITOR CHIP	470P	1	PCS	C516	
3--1	贴片电容0805 CAPACITOR CHIP	104P	5	PCS	C401.402.511.512.514	
3--2	贴片电容0805 CAPACITOR CHIP	1UF	5	PCS	C403.404.405.406.508	
4	贴片三极管 TRANSISTOR CHIP	9014	4	PCS	Q201.202.401.402	
5	电阻1/2W RESISTOR	10R	2	PCS	R501.504	
6	电阻1/4W RESISTOR	2.2R	2	PCS	R203.204	
6--1	电阻1/4W RESISTOR	33R	1	PCS	R214	
6--2	电阻1/8W RESISTOR	910K	2	PCS	J1.33	
7	电解电容 ELECT CAPACITOR	4.7UF/16V	2	PCS	C209.210	
7--1	电解电容 ELECT CAPACITOR	47UF/16V	7	PCS	C207.208.213.407.408.409410	
7--2	电解电容 ELECT CAPACITOR	100UF/16V	1	PCS	C212	
7--3	电解电容 ELECT CAPACITOR	220UF/16V	6	PCS	C205.206.211.506.507.510	
7--4	电解电容 ELECT CAPACITOR	470UF/16V	2	PCS	C509.513	
7--5	电解电容 ELECT CAPACITOR	1000UF/16V	3	PCS	C201.202.515	
7--6	电解电容 ELECT CAPACITOR	2200UF/25V	1	PCS	C505	
8	涤纶电容 MYLAY CAPACITOR	0.1UF/J	2	PCS	C203.204	
9	二极管 DIODE	IN4148	4	PCS	D401.402.403.505.	
9--0	二极管 DIODE	IN4001	1	PCS	D506	
9--1	二极管 DIODE	IN5391	4	PCS	D501.501.503.504	
9--2	二极管 DIODE	IN5822	1	PCS	D510	
10	稳压管 ZENER DIODE	5.6V	1	PCS	D508	
10--1	稳压管 ZENER DIODE	9.1V	1	PCS	D509	
11	三极管 TRANSISTOR	S8050	1	PCS	Q501	工字形
11--1	三极管 TRANSISTOR	D882	1	PCS	Q502	
12	电感 CHOKE COIL	220UH	1	PCS	L502	
13	IC INTERGRATED CIRCUIT	TA8227GP	1	PCS	U201	
13--1	IC INTERGRATED CIRCUIT	MC34063A	1	PCS	U501	
14	插座 CONNECTOR SOCKET	2P/2.0	2	PCS	CN3.9	
14--1	插座 CONNECTOR SOCKET	3P/2.0	1	PCS	CN1	
14--2	插座 CONNECTOR SOCKET	4P/2.0	1	PCS	CN5	
14--3	插座 CONNECTOR SOCKET	2P/2.5	2	PCS	CN501.BATT	
14--4	插座 CONNECTOR SOCKET	3P/2.5	1	PCS	CN6	
14--5	插座 CONNECTOR SOCKET	4P/2.5	3	PCS	CN2.7.8	
14--6	插座 CONNECTOR SOCKET	6P/2.5	1	PCS	CN301	
15	功能开关 SWITCH FUNCTION	SS43D01GB8	1	PCS	SW1	
16	重低音开关 BASS SWITCH	7*7	1	PCS	BBS	
17	音量电位器 VOLROTENTIOMETER	RV163GH-D50K-35F-7	1	PCS	VR1	
18	带开关耳插座 PHONE JACK SWITCH	3507-202	1	PCS	PH1	
19	跳线 JUMPER CABLE	0.4*46MM	15	PCS		

物料明细表

机型	VCD-88FC (2W)		BOM层		收音板 (AM-FM位)	
项次	物料名称	物料规格	用量	单位	位号	备注
1	收音板 RADIO PCB	113*62*1.6MM	1	PCS		VCD88M-R-0
2	贴片电阻1206 RESISTOR CHIP	0R	3	PCS	6R1.2.3	
2--0	贴片电阻0805 RESISTOR CHIP	100R	5	PCS	R607.660.665.666.671	
2--1	贴片电阻0805 RESISTOR CHIP	330R	1	PCS	R602	
2--2	贴片电阻0805 RESISTOR CHIP	1K	1	PCS	R670.	
2--3	贴片电阻0805 RESISTOR CHIP	3.3K	2	PCS	R604.669	
2--4	贴片电阻0805 RESISTOR CHIP	6.8K	2	PCS	R623.624	
2--5	贴片电阻0805 RESISTOR CHIP	4.7K	2	PCS	R661.662	
2--6	贴片电阻0805 RESISTOR CHIP	10K	2	PCS	R672.668	
2--7	贴片电阻0805 RESISTOR CHIP	18K	2	PCS	R605.606	
2--8	贴片电阻0805 RESISTOR CHIP	220K	1	PCS	R601.	
2--9	贴片电阻0805 RESISTOR CHIP	100K	3	PCS	R663.664.667	
3	贴片电容0805 CAPACITOR CHIP	30P	3	PCS	C601.602.663	
3--1	贴片电容0805 CAPACITOR CHIP	100P	4	PCS	C603.664.666.668	
3--2	贴片电容0805 CAPACITOR CHIP	102P	2	PCS	C610.665	
3--3	贴片电容0805 CAPACITOR CHIP	153P	2	PCS	C619.620.	
3--4	贴片电容0805 CAPACITOR CHIP	223P	2	PCS	C667.669	
3--5	贴片电容0805 CAPACITOR CHIP	104P	8	PCS	C604.605.608.611.613.624.629.671	
3--6	贴片电容0805 CAPACITOR CHIP	1UF	3	PCS	C618.621.622	
4	贴片三极管 TRANSISTOR CHIP	9018	3	PCS	Q660.661.662	
5	电阻1/8W RESISTOR	10R	3	PCS	R620.673.622	
5--1	电阻1/8W RESISTOR	100R	1	PCS	R609.	
5--2	电阻1/8W RESISTOR	560R	1	PCS	R608	
6	瓷片电容 CERAMIC CAPACITOR	2P	2	PCS	C615.662	
6--1	瓷片电容 CERAMIC CAPACITOR	4P	1	PCS	C612	
6--2	瓷片电容 CERAMIC CAPACITOR	8P	1	PCS	C616	
6--3	瓷片电容 CERAMIC CAPACITOR	150P	1	PCS	C625	
7	电解电容 ELECT CAPACITOR	10UF/16V	3	PCS	C614.617.660	
7--1	电解电容 ELECT CAPACITOR	47UF/16V	2	PCS	C606.623	
7--2	电解电容 ELECT CAPACITOR	470UF/16V	1	PCS	C607	
8	二极管 DIODE	IN4148	2	PCS	D601.602	黄色
9	稳压管 ZENER DIODE	5.1V	1	PCS	D603	黄色
10	FM线圈 FM COIL	Φ0.8*4.5*4.5T	2	PCS	L601.602	
10--1	FM线圈 FM COIL	Φ0.8*5*3.5T	1	PCS	L603	
11	三脚滤波器 FILTER	L10.7MHz	1	PCS	CF602	
11--1	二脚滤波器 FILTER	J10.7MHz	1	PCS	CF603	
11--2	二脚滤波器 FILTER	455KHz	1	PCS	CF601	
12	电感 CHOKE COIL	10UH	2	PCS	L661.662	
13	IC INTERGRATED CIRCUIT	TA2111/SP2111	1	PCS	U601	
14	中周 I. F. T.	21B黄 7*7	1	PCS	T608	
14--1	中周 I. F. T.	0783A红 7*7	1	PCS	T610	
15	插座 CONNECTOR SOCKET	6P/2.0	1	PCS	CN603	
16	鸡眼 EYELET	Φ1.8*3MM	1	PCS		
17	波段开关 BAND SWITCH	SK43D01GB6	1	PCS	SW601	
18	AM线圈 AM COIL	90: 28	1	PCS	BAR1	
19	PVC	126/40	1	PCS		
20	磁棒 FERRITE ABAR	55*13*5	1	PCS		
21	跳线 JUMPER CABLE	0.4*46MM	1	PCS		
22	海棉 SPONGE	10*10*10MM	2	PCS		

乔新有限公司

[illegible]

乔新有限公司

物料明细表

[illegible]

注：根据客户要求来选择各功能

D

C

B

A

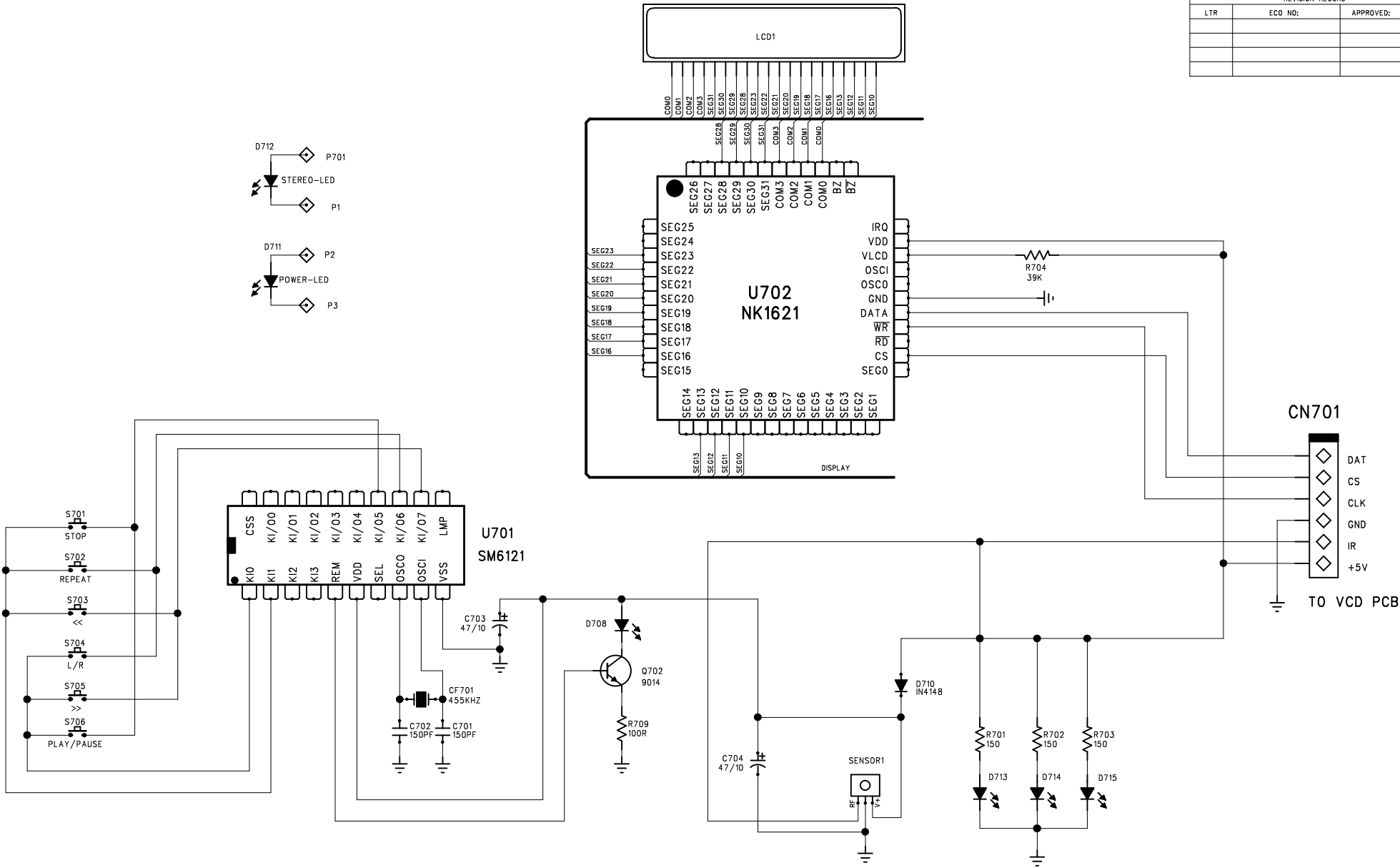
D

C

B

A

REVISION RECORD			
LTR	ECD NO:	APPROVED:	DATE:



COMPANY: WINGER			
TITLE: VCD-88-LCD			
CODE:	SIZE:	DRAWING NO:	REV:
SCALE:		SHEET: OF	

DRAWN: X D X	DATED:
CHECKED:	DATED:
QUALITY CONTROL:	DATED:
RELEASED:	DATED:

6

5

4

3

2

1

REVISION RECORD			
LTR	ECO NO;	APPROVED:	DATE:

D

D

C

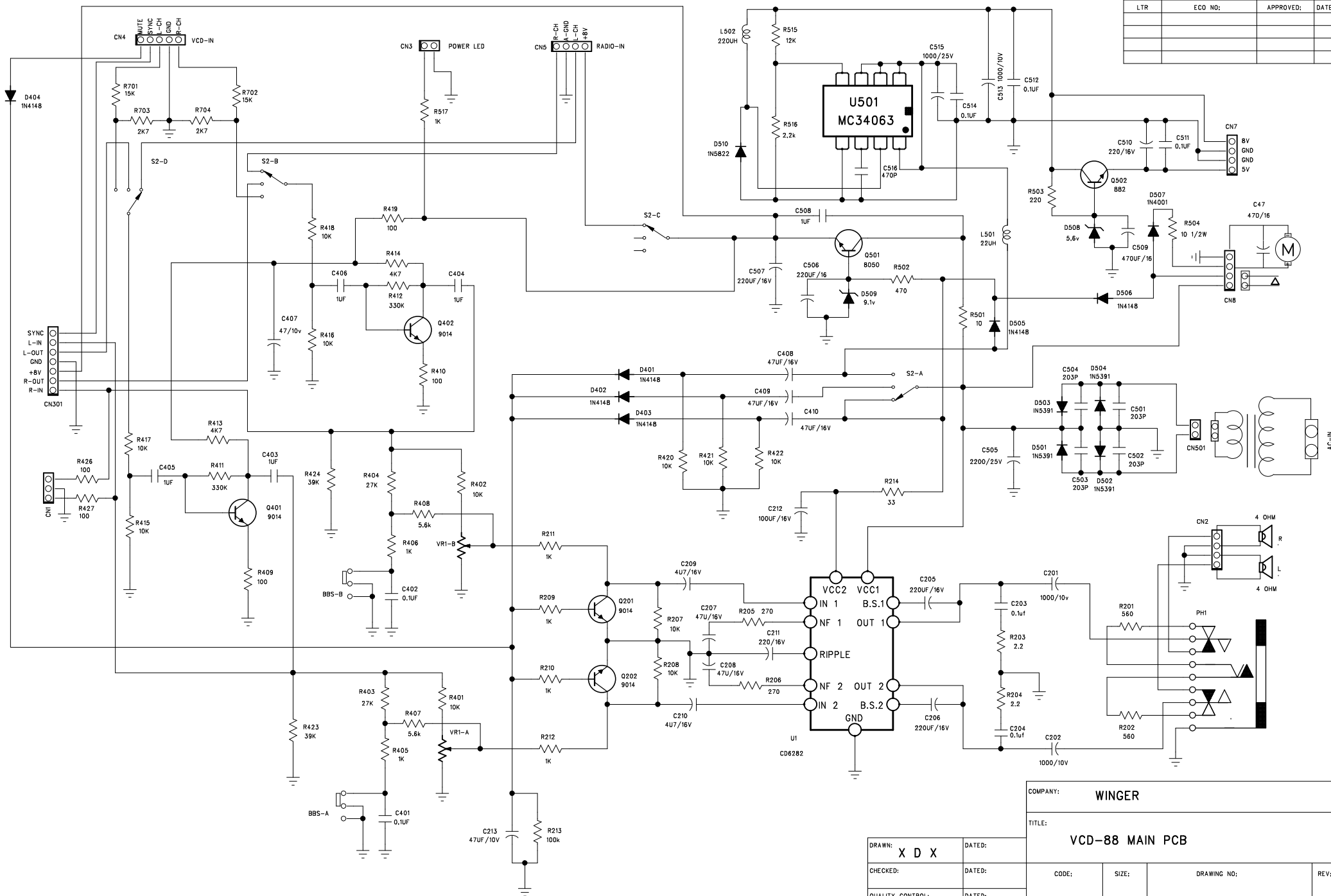
C

B

B

A

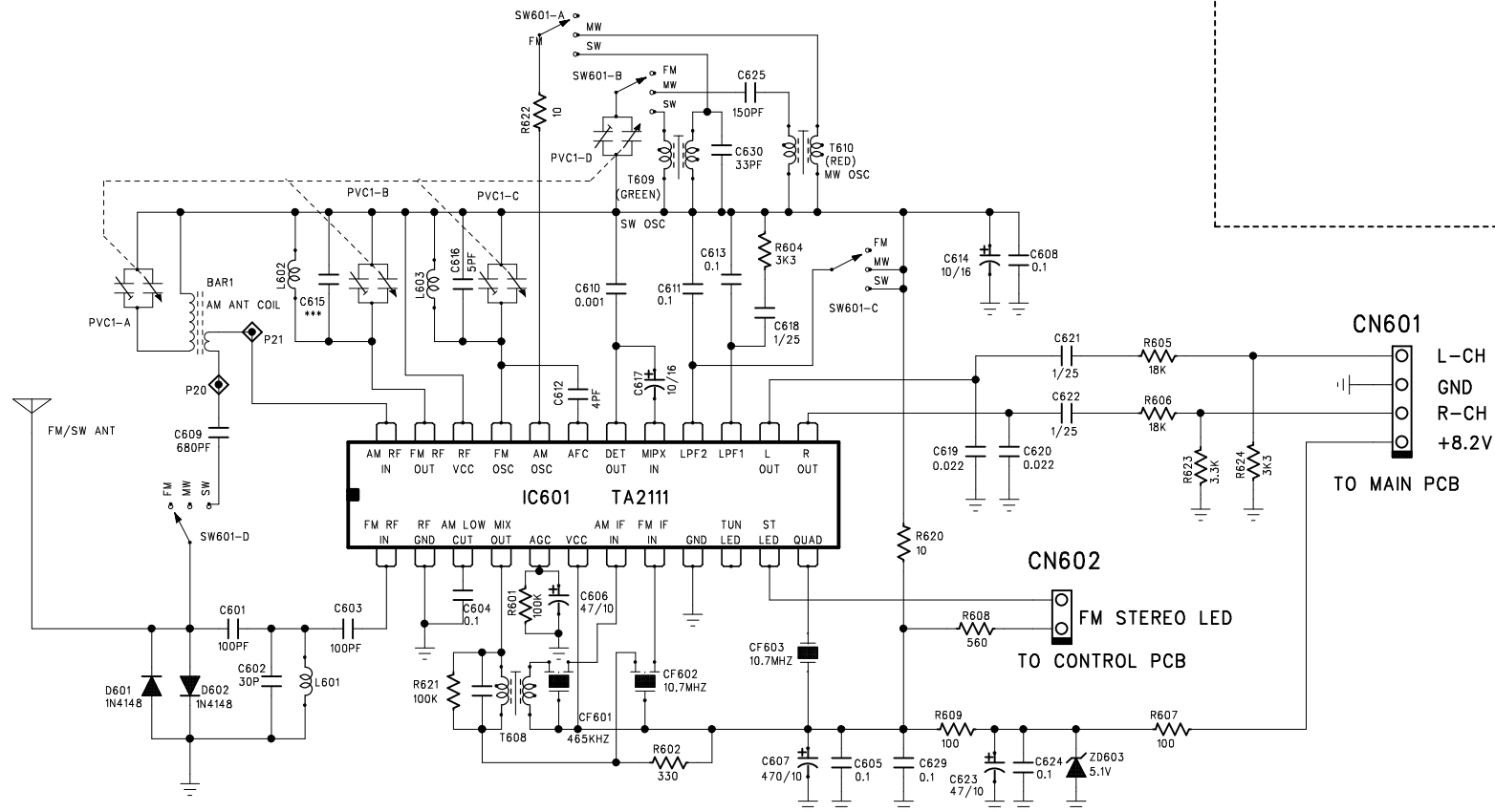
A



COMPANY: WINGER			
TITLE: VCD-88 MAIN PCB			
CODE:	SIZE:	DRAWING NO:	REV:
SCALE:		SHEET: OF	

DRAWN: X D X	DATED:
CHECKED:	DATED:
QUALITY CONTROL:	DATED:
RELEASED:	DATED:

REVISION RECORD			
LTR	ECD NO:	APPROVED:	DATE:



COMPANY: WINGER			
TITLE: VCD88 RADIO			
CODE:	SIZE:	DRAWING NO:	REV:
	A2		V1.0
SCALE:		SHEET: OF	

DRAWN: X.D.XU	DATED:
CHECKED: H.J.WOO	DATED:
QUALITY CONTROL:	DATED:
RELEASED:	DATED:

6

5

4

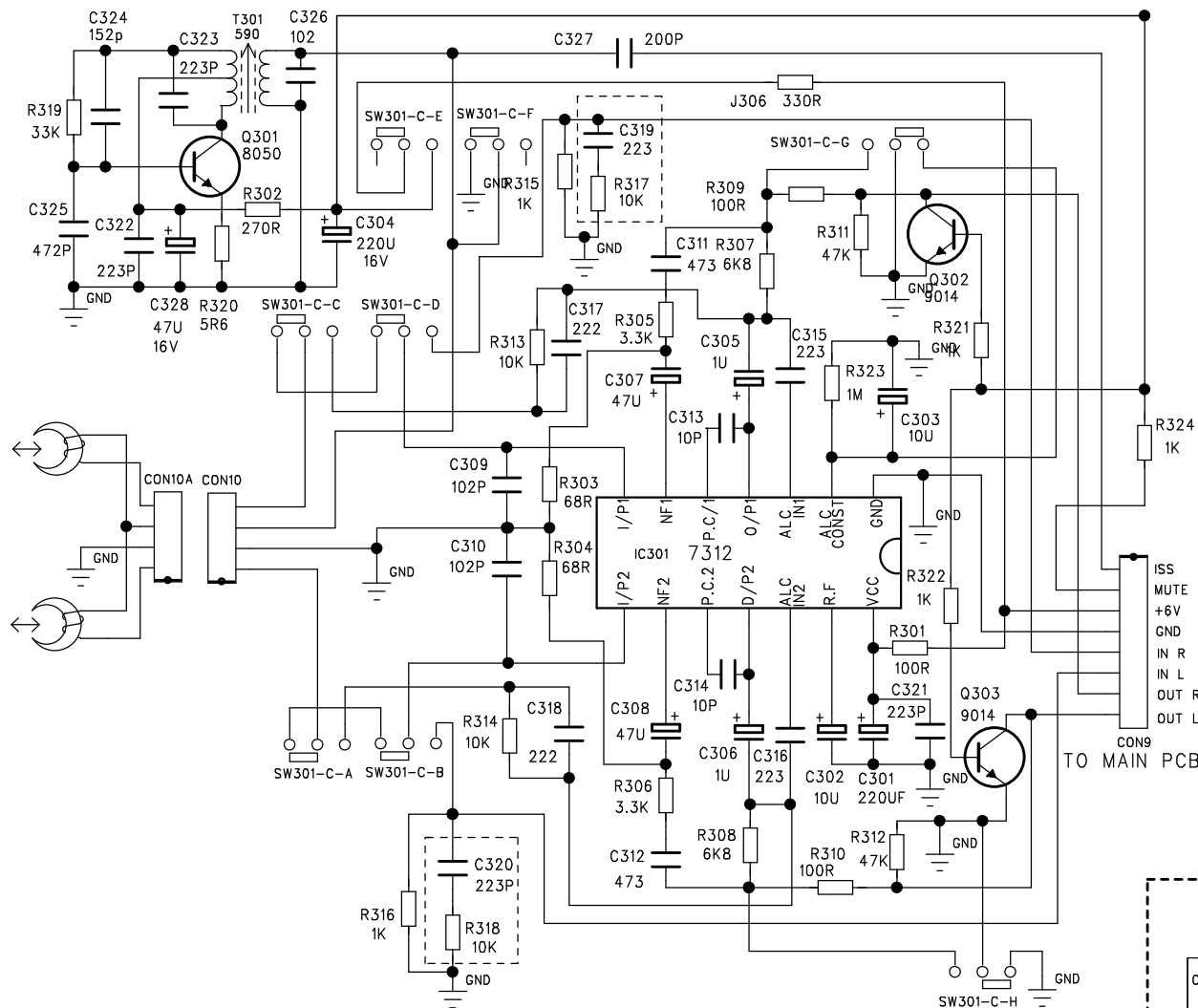
3

2

1

REVISION RECORD

LTR	ECO NO:	APPROVED:	DATE:



COMPANY:

WINGER

TITLE:

WG-RP TEPE

DRAWN:
CH.F.UDATED:
05-04-05

CHECKED:

DATED:

QUALITY CONTROL:

DATED:

RELEASED:

DATED:

CODE:

SIZE:

DRAWING NO:

REV:

A3

SCALE:

SHEET: OF